



THE PINE RUN NEWS

An independent Community Publication Volume 21, Issue #5 March, 2024
Editor, Trish Hodge Email: trishmhodge@gmail.com



Darrin Burr Bishop

Darrin Burr Bishop, known affectionately as Mr. Postman, passed away on February 28, 2024, in Osprey, FL. Born July 15, 1954, in Des Moines, IA, Mr. Bishop, was a beloved husband, father, grandfather and stepfather. Smart, kind and funny, Darrin valued family and community, dedicating his life to making the world a more beautiful place. He had a distinguished 34-year career with the USPS, culminating at USPS Headquarters in Washington D.C., where he worked directly for the Postmaster General. His work included writing training manuals, reorganizing the vast distribution system, managing the Census, resolving the Anthrax attacks, and overseeing mail operations during and after the 9/11 terrorist attack.

Outside of work, Darrin enjoyed disc golf, long-distance bike rides, traveling, music, and was a devoted fan of the Green Bay Packers, Kansas City Royals, and Drake Basketball. He was also an avid reader, chess player, crossword puzzle solver, and a community activist.

Mr. Bishop is survived by his wife, Carol A. Bishop, Osprey, FL, daughter, Morgan A. Bishop, Sudlersville, MD, Gabriella A. Bollenbaugh, Sudlersville, MD, stepson, Jason Sandblom, Tacoma, WA, and stepdaughter, Nicole Beard, Sarasota, FL. He was preceded in death by his mother, Mary V. Bishop, father, Lloyd W. (Bud) Bishop, and brother Dennis Bishop.

A small family gathering will come together in Osprey, FL, to honor Darrin and return his remains to the Gulf where he and his wife had enjoyed many beautiful memories. In lieu of flowers, Darrin requested that friends and family choose to do something especially nice for another person.

Note from Carol Bishop

I want to thank all our Pine Run friends for the kindnesses they have bestowed on me following Darrin's death on Feb. 28th. He requested no memorial and in lieu of flowers just asks that all his friends endeavor to do something nice for someone else.

It really warmed my soul to see so many out working along the Central Path removing vines and invasive plants in preparation for the new "improved" pathway. Darrin was all about volunteerism and doing right by our community so I am glad to see so many others sharing that vision.

Thank you, Carol Bishop

New Deck Furniture



The Social Club has purchased all new furniture for the Clubhouse Deck.



Clubhouse too noisy for you? Enjoy outdoor dining with the new tables and chairs.



Sit and enjoy the sunset.

Social Club News

Gail Brown, President

Looking Back

The Picnic on the Patio, held on February 15th, was attended by 38 Pine Runners who enjoyed a great cook-out! Hamburgers and hot dogs were supplied by the Social Club and attendees brought a wide assortment of side dishes to share. Thanks go to Billie Born and Steve Hopkins for manning the grill!

The Friday Sunset Social, now fondly known as Cocktails and Corn Hole, held on Friday, March 8, was attended by some 15 Pine Runners.. A spirited corn hole tournament, organized by Chuck Hodge, took place. The Sunset Social is held on Fridays and corn hole begins around 4:45. Plan to come! Bring a team!

Looking Forward

Please join your friends and neighbors at the Pine Run Saint Patrick's Day Dinner, Sunday, March 17th at 6:00 pm. This event is one of the highlights of our social season...Corned Beef and cabbage and trimmings, Irish side dishes, Irish music...a grand feast!

If you would like to prepare a corned beef and cabbage, call Judy at 954-849-1882.

BYOB and bring a side dish (Irish or not) to share. Place settings will be provided.

Upper Deck Upgrade

The Social Club, thanks to Pine Runners' generous support of our events and fund-raisers, has purchased new furniture for the Clubhouse upper deck. Two comfortable seating groups and a table with chairs now face the pool and allow for great conversation and sunset viewing. The two teak tables have been moved to the alcoves by the steps and now have new chairs at each one. This seating will afford our residents outside seating options when they attend clubhouse events as well as a shaded area for summer get-togethers. Special thanks to Billie Born, chief "designer", and to Rob and his visitor from the Netherlands, Merk, who assembled most of the furniture!

Call For Committee Members

Any organization is only as strong as its members. Pine Run Association is no exception. We know that we have incredible residents who contribute greatly to our community. In recognition of this, the Board of Directors has voted to approve the following standing committees: Lighting; Landscaping; Rules and Regulations; Compliance; Irrigation; Maintenance; Volunteers; and Finance. The following Ad Hoc Committees were also approved: Termites; Atrium Doors (Section 1); and Kayak Storage Area. Each of these committees will inform and make recommendations to the BOD.

Please consider increasing your community participation and voice by volunteering to serve on one or more of these committees. You will be rewarded by becoming part of the solution to improving our community, forging new bonds with neighbors, and knowing that your voice is being heard.

If there is a committee that you are willing to join, please email BOD secretary Keenie Bugenhagen at keeniepinerun@gmail.com with the following information: Name; Committee(s) you would like to be part of; Unit No; and Email address. Please also indicate if you are willing to serve as a committee chairperson.

Upcoming Events

Friday, March 15, 3:00 PM

Book Club

Sunday, March 17th 6:00PM

St. Patricks Pot-O' Luck

Wednesday, March 27th 11:30

Restaurant Outing

Moderns That Matter

By Annette Deckers

Pine Run condominiums has been nominated as a Modern building that Matters. The Architecture Sarasota organization will present this project on March 20th. Out of more than 1000 buildings a top 100 will be selected. See the invitation below.

Join us in celebrating the announcement of the *Sarasota 100* and the opening of the *Moderns That Matter* Exhibition.

Wednesday, March 20, 2024

McCulloch Pavilion

Termite Control

By Damon White

I understand that there is grave concern in the community about tenting for termites. I, too, had grave concerns. However, I am writing this missive to let people know that I have now been tented twice — once on the East Coast of Florida about ten years ago and recently as an owner in the 700's that were tented in early December.

My concerns have been alleviated by two factors. First, I have developed no medical conditions to date — no growths bulging out of my head, no skin lesions, no unusual bleeding, and a tip-top annual checkup two months ago — and, as someone said recently, the tenting ten years ago was probably with the more dangerous gas that is no longer used. The second factor is the fact that Pine Run received a report from a termite expert at the University of Florida suggesting that we have an aggressive breed of termite capable of doing considerable damage. The only method of eradicating these termites is through tenting. The University of Florida expert reported that the heat treatment would not suffice.

I might add that when we were tented in December, we left a couple of plants we did not care about in the condo. They survived.

From my point of view, the only drawback to tenting is the work owners will face in bagging all foodstuffs, medicines, toiletries, etc. That is certainly a process that I would encourage people to start three or four days ahead of time. You will be provided the bags for the work and explicit directions for the handling and sealing of those bags. Follow them.

ARTS & ENTERTAINMENT

Poetry Conversation

Curated by Tanya Young

Have You Seen Blacksnake Swimming?

Down at Blackwater
blacksnake went swimming, scrolling
close to the shore, only
His head above the water, the long
yard of his body just beneath the surface,
quick and gleaming. The day was hot, but there
in the water, another snake might have
danced with him. But, since he was alone
he whirled a little, unnecessarily, and picked up speed,
so that on both sides he made a lacy wake
and there was a rippling sound,
a sort of soft music, just enough
to amuse that narrow mouth, whose corners,
in that coolness, were lifted in even more
than his usual gentleman's smile.

Mary Oliver

Cirque des Voix

from Ann Ferraro

She will be singing with Key Chorale in both of these exciting concerts.



Friday, March 22 7 PM

Saturday, March 23 2PM, 2024

Saturday, March 23 7 PM, 2024

At the Sailor Circus Arena \$50 - \$100

2075 Bahia Vista St.

Sarasota, FL 34239

CAC teams up with Key Chorale to present an exhilaratingly unique show that combines the 100+ voices of the Key Chorale and the musical mastery of the 40 piece Cirque Orchestra with professional circus artists.

PURCHASE TICKETS HERE: [Cirque des Voix 2024](#)

Sarasota Early Music Consort (SEMC)

From Dan Muss

Sarasota Early Music Consort (SEMC) is a group of amateur musicians that play Renaissance and Baroque music on



recorders and other period instruments. And they perform in flashy renaissance costumes. Carol and Dan Muss play in this group.

For this program they've added music from the romantic period and our present day. The program is the same for all three dates:

Gulf Gate Library at 2:00 p.m. on Tuesday, March 26th.

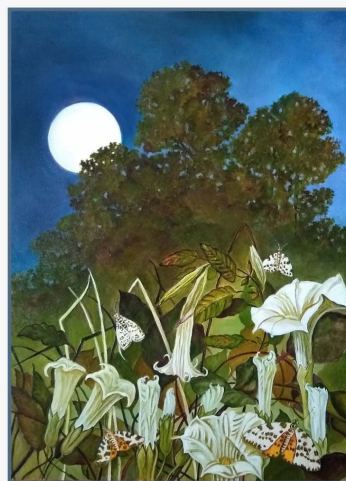
Crocker Church at 2:00 p.m. on Tuesday, April 2nd.

Bay Village at 7:30 p.m. on Thursday, April 25th.



Art in the Afternoon

Join us as we combine storytelling, music, and artwork into a fun and inspiring set of performances.



Artist: Ivana Carli

Wednesday,
February 21, 2024
1:30PM

Wednesday,
March 27, 2024
1:30PM

Community Room,
William H Jervy, Jr.
Venice Public Library
300 Nokomis Ave S



FREE
ADMISSION!



Message From The Landscaping Committee

Keenie Bugenhagen

Trimming around buildings continues. Our landscapers, Devine Design, are here every other Tuesday through the end of April. Beginning in May, they will be here once a week. Residents are reminded that they should make sure that vehicle windows and convertible tops are closed on Tuesdays. Some areas including carports have not been able to be blown clean of leaves and debris because of open vehicles. Please do not interfere with landscaping work; direct any questions or concerns to the BOD Liaison to the Landscaping Committee, Keenie Bugenhagen. All residents are reminded that they are welcome to attend Committee meetings.

Volunteers continue their work along the shell path. Bamboo, Brazilian pepper, Carrotwoods, Smilax, Rosary pea, Poison ivy, Muscadine, Virginia creeper and other undesirable plants are being eliminated. The removal of these plants is enabling many native, desirable plants to propagate and fill in these areas. There are plans to remove a dead pine, and then transplant two Oaks. Other native plants will also be installed. If you have not walked this path recently, take a stroll to see the progress. Two residents have mentioned the increased number of birds and butterflies in this area.

Residents have been attending educational sessions in Eco-Art. It involves artistically improving the landscape in ways that benefit the ecosystem. The shell path project is an example of this. As we continue to make improvements, both wildlife and humans benefit. In our continued educational series on harmful and beneficial plants, this month we feature Golden Rain Tree as the invasive species and Dahoon holly as a native alternative.

Lithium-ion batteries...a threat?

By Dan Muss

There was an article in our local Sarasota newspaper recently entitled "Lithium-ion battery led to NYC apartment fire." There was one fatality and the NY Fire Commissioner announced that these batteries have recently become a major cause of fires and fire deaths in NYC and that the problem is growing nationwide.

What's going on? I'm not an expert in this field but I can take a stab at understanding this.

All batteries have a "shelf-life"; i.e. left on a shelf without any usage they will eventually die. They die because tiny variations in the active surface of the device produce tiny variations in the generated voltage leading to tiny internal currents that will, over a long period of time, lead to its death. These tiny currents are not a threat of fire, but under charge these internal circulating currents can be a threat. So, where do we all have these batteries? In our mobile smart phones! So, here is my advice: *do not leave your phones on charge overnight or when you are away; charge them when you're around.*

What about electric cars? They are powered by these batteries. If I had one, I would not leave it on charge overnight in the garage. I would find a way to charge it outside, away from the house.

And there may be other Li-ion batteries around. I suspect there's one in each of our land-line phone sets.

Are there any other opinions on this subject?

Golden Rain Tree



Golden Rain Tree, or *Koelreuteria paniculata*, (formerly *Koelreuteria elegans*) is a Category 2 invasive in Florida. It is native to Taiwan, and was introduced to Florida in the early to mid-1900's. It has been prized as an ornamental tree because of its yellow flowers. Unfortunately, its fast growth and seeds that are easily dispersed by wind, have allowed it to escape cultivation and threaten native species throughout much of the southeast.

Dahoon Holly



Dahoon holly, or *Ilex cassine*, is a native plant which grows all throughout Florida. It is a specimen tree that boasts white flowers and red berries, making it attractive to birds, pollinators and small mammals. Its attractive appearance makes it a wonderful specimen tree, growing in both shade and sun.

Answer to Trivia Question

Answer to last month's Trivia question- Dan Muss:

I don't know this for sure but my guess is that our microwave ovens are powered by a tube called a Klystron emitting radiation at about 1 Gigahertz. In physics there is a fundamental relationship for radiation...

Frequency x wavelength = speed of light

If one puts in the numbers for this frequency and the speed of light one gets a wavelength of about 8 inches, a hah! That's in the range of dimensions of the oven's cavity. So, what happens is there are "standing waves" produced by reflection of the microwaves from the metal walls of this cavity. Therefore there are hot spots and cool spots in the cavity. Ergo the need to rotate the food to be warmed.

Message From The Lighting Committee

By Patricia Kinney

Lighting Committee

The lighting committee was formed to research and experiment with lower lumens, lower kelvins and shielding for existing light fixtures to determine ways to provide a safe and comfortable environment for the entire community. The goal is to mitigate light trespass, blinding glare, darkened shadowed areas, Sky glow, clutter - bright, confusing, and excessive grouping of light sources. (Ex. the clubhouse, entrance and pool area).

The cluster of glaring lights, some serving no purpose, contribute to blinding shadows blacking out areas along the walkway. The shell paths high kelvin blue white lights will hopefully be modified to a much lower k - amber. The glaring upward light posts along the pickle-ball courts cast light, trespass into units, beam light and shadows 30' high and beyond can hopefully be modified. Regarding thoughts about lighting for crime prevention lights don't keep criminals away. They can quite remarkably provide a place to hide.

For a community that professes being "in harmony with nature" I hope that that sense of connectedness and mindfulness can be realized by adapting the lighting to apply to that notion with respect to nocturnal wildlife, pollinators, plants, humans and the stars.

In respect to the lighting grant awarded 5 years ago, much of the research presented in the application was crafted with information from DarkSky.org an organization that I've been involved with for 25 years, and NPS.gov Science of Light. expressing the harm excessive light was doing and how to prevent it. When the campaign for the lights was initiated in the community the light specification stated "downward casting lights". They are not. This is an attempt to apply that intention for a less harmful impact on all of nature and us. Anyone interested in reducing glare, light trespass into their units are welcome. This is not to add lighting; ex. at a speed bump. A flashlight, cellphone light, minors cap light, runners waist lights etc. can all be part of a personal responsibility tool kit to light the way.

In Light of it All - a side note

The Decline of Butterflies, Moths and Lightning Bugs

A couple of interesting facts I've come across regarding the decline of pollinator moths, butterflies and the sad population decline of lightning bugs due to ALAN: aka Artificial Light at Night :

Two research entomologists I've personally communicated with - Yash Sondhi, who just received his Doctorate who, along with his team of scientists did the following revealing research on moths and butterflies. "The surprising reason insects circle at night: They lose track of the sky." If you google that title it will come up in a number of places along with the YouTube video.

Yash turned me on to Avalon Owens, an entomologist and light pollution advocate who has done numerous studies on light pollution and the decline of lightning bugs. Just google her name and lightning bugs and you will find all her work. Yash turned me on to her when I asked about termite swarming at ALAN. Avalon sent me a research document way over my head but she mentioned to me how termites swarm at night in light using it as an attraction to finding a mate and then finding a home to reproduce.

Hmmm... should we not consider curtailing keeping the white light fluorescent tubes in the carports on 13 hrs throughout the night? Especially during swarming season 🤔.



Blacked out stairs
from light glare.

Safe view of stairs
with shield.

Fear of the Night Fear of the Light

"Light pollution, over lighting for personal use negates a sense of personal responsibility, enabling and nurturing their self inflicted sense of fear." 2023

Paul Bogard

Author of :

Let There be Dark

The End of Night

What if Night? childrens book

To Know a Starry Night

Also numerous opeds regarding the ever increasing damage of light pollution in NYT, WaPo, LAI, The Guardian, etc.

www.paul-bogard.com

...though my soul may set in darkness,

it will rise in perfect light,

I have loved the stars fondly

to be fearful of the night

The Old Astronomer 1868

Sarah Williams

A Little bit of Info on Lumens, Lighting, and LEDs

Lumen, latin for the word light was coined in 1894 by French physicist and engineer Andre Eugene Blondel known for inventing the oscillograph and the measurement of light. Lumen translates to brightness, illumination, light output as opposed to watts, a unit of power, the energy used. Watt energy heats up as opposed to LEDs. LEDs, (light emitting diodes) invented in 1962 by GE engineer Nick Holonyak. LEDs were introduced commercially in 1968 but because at that time only small flows of lumens (brightness) were dribbled out (converting watts into lumens) they were ideal to start the lighting transformation by being used in instrument and indicator lights. Today's LEDs are 1,000's of times more efficient. WaPo -LED lights are meant to save energy. They're creating glaring problems. 6/23/2023

As per the Dept. of Energy - www.energy.gov keeping it simple - What's a Lumen?

Lumens measure how much light you are getting from a bulb. More lumens mean's it's a brighter light; fewer lumens means it's a dimmer light.

Lumens are to light what

Pounds are to bananas

Gallons are to milk

Lumens let you buy the amount of light you want. So when buying light bulbs think lumens, not watts. Ex. A 450 lumen light bulb is equivalent to a 40 watt bulb.

The Pine Run News welcomes contributions
from all of our readers.

News, photos, puzzles, observations,
announcements, anything you would like to share
with the Community.

Deadline for the April Issue: Wednesday, April 10th

Send Contributions to:
trishmhodge@gmail.com

The Pine Run News is An independent Community Publication
If you no longer wish to receive this newsletter please notify Trish Hodge:
trishmhodge@gmail.com

